

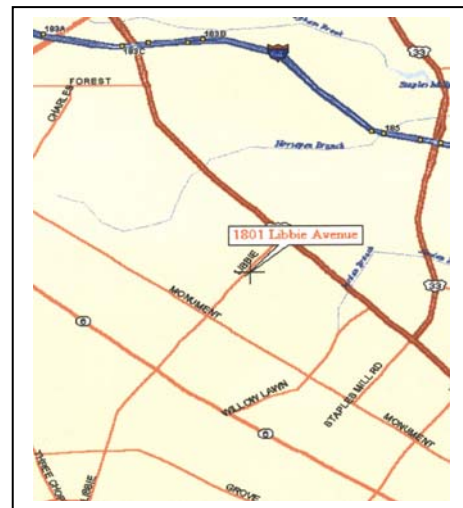
For Lease

3,880 SF
1st Floor - Office Space



1807 Libbie Avenue, Richmond, VA

- **3,880 S.F. - 1st Floor - Contiguous Available**
- **Colonial Williamsburg Architecture**
- **Ample Safe Parking, beautifully Landscaped**
- **Private outside entrance to suite.**
- **High end build-out to space, private bathrooms.**
- **Prime West End location, one block from St. Mary's Hospital on Monument Ave
One block from Libbie Place on Broad Street**
- **\$17.00 PSF - Full Service - Rental Rate**

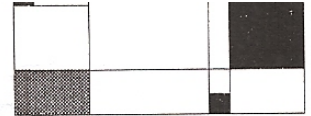
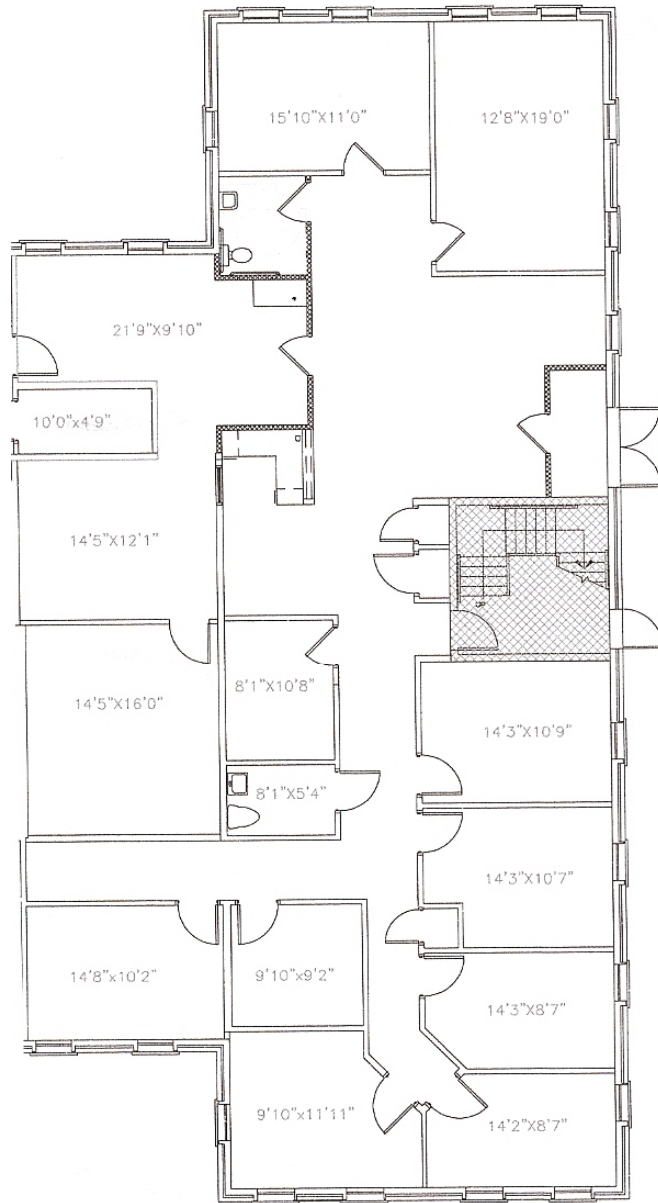


Floor Plan on back



Ottley Properties, Inc.
PO Box 17901
Richmond, VA 23226
Fax: 804-562-4283

For More Information Contact:
Julian T. Ottley, CCIM
804-562-7373
julian@ottleyproperties.com



Hummel Associates

ARCHITECTURE
SPACE PLANNING
INTERIOR DESIGN

223 North First Street, Richmond, VA 23219
(804) 643-7337 FAX (804) 643-7720

job number

07-103

LIBBIE SQUARE
1807 LIBBIE AVENUE
RICHMOND, VIRGINIA

FIRST FLOOR

sheet title

RECORD DRAWING

drawn by
K.THOMAS
CERT # NA

checked by
CHP
CERT # 0412-000216

revision

date
07 MARCH 2007
file name
1stFloor.dwg

sheet number

IA1.0